

SUMMARY
REPORT



Pacific Coral Reef Collective



Australian Government
Great Barrier Reef
Marine Park Authority



Reef
Authority



Sustainable,
transformative,
and resilient for a
Blue Pacific

SPREP
PROE

Collectively facing the challenges to coral reefs across the Pacific

Coral reefs throughout the world face unprecedented challenges and the community of Pacific Island countries has a wealth of knowledge and experience to share as we seek to address them.

The Great Barrier Reef Marine Park Authority is the Australian Government's lead management agency for the Great Barrier Reef Marine Park, and it is our responsibility to protect and manage this World Heritage site, to be enjoyed by current and future generations. The Australian Government's Reef Protection Package included investment for the Great Barrier Reef Marine Park Authority (Reef Authority) to significantly strengthen and enhance its capacity to manage and protect the outstanding universal values of the World Heritage property. A component of the investment was allocated to leadership exchange and capacity building from which the idea for a Pacific Coral Reef Collective forum evolved.

The *Pacific Coral Reef Action Plan 2021–2030* (the Plan) was developed by the Secretariat of the Pacific Regional Environment Programme (SPREP) with members, coral reef scientists and conservationists globally. SPREP members endorsed the Plan at the 30th SPREP Meeting in 2021 and at the 2022 UN Ocean Conference in Lisbon, the Reef Authority committed to assisting SPREP implement the Plan.

The Plan intends to focus the region's coral-reef conservation and management on four priorities:

1. conservation of habitats and biodiversity
2. sustainable fisheries and food security
3. resilience and adaptation to climate change
4. sustainable tourism.

To address these priorities, the Plan recommended eight action areas (**Figure 1**).

The series of briefings, site inspections and collective thinking workshops delivered during the Pacific Coral Reef Collective were mapped to these action areas where there was strong alignment with Reef Authority programs and operations.

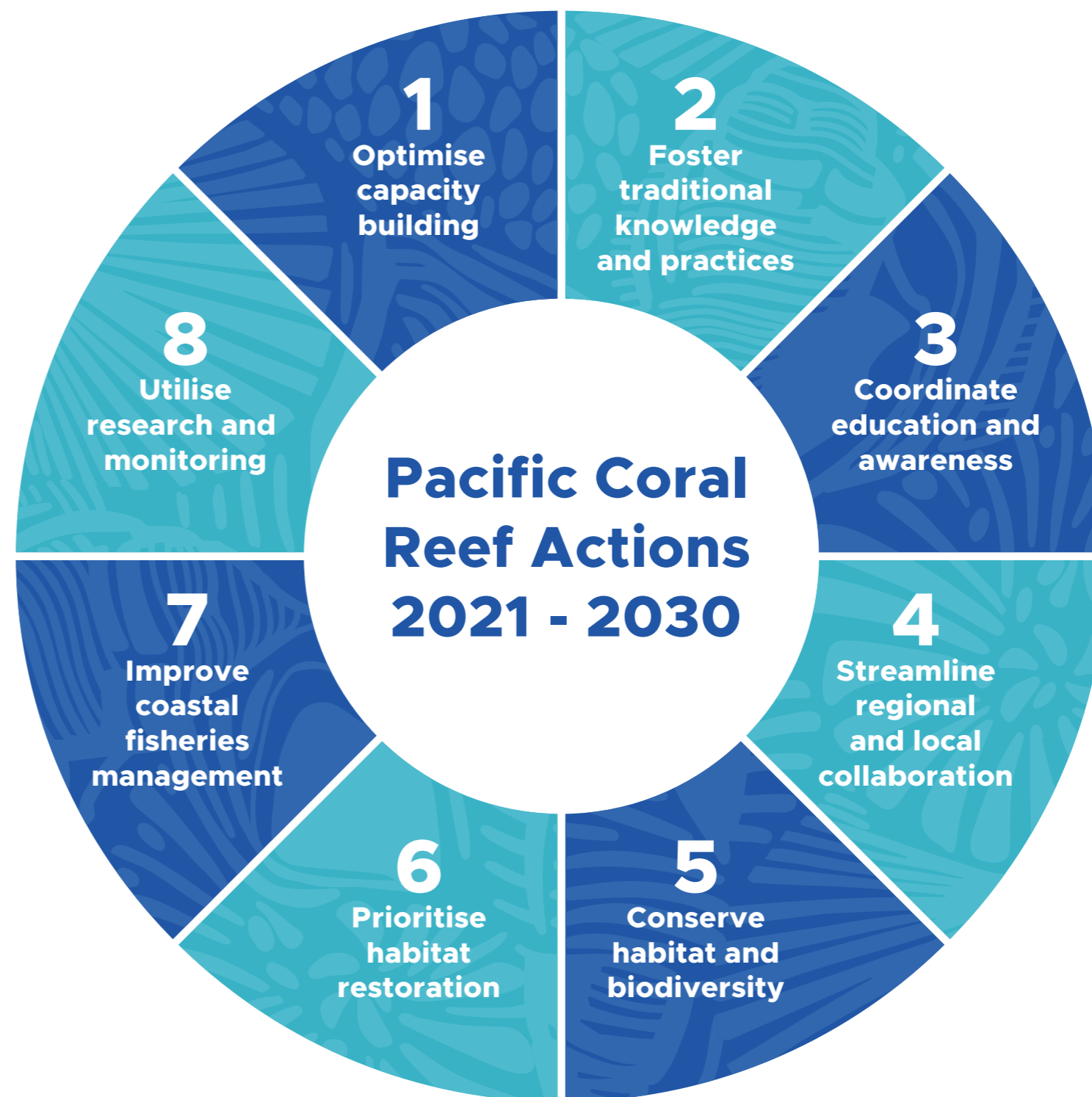


Figure 1: Action areas for Pacific coral reefs identified in the Pacific Coral Reef Action Plan 2021–2030.



Harnessing the power of the collective

The **Pacific Coral Reef Collective** (the forum) brought together reef managers and designated partners from 14 Pacific countries (SPREP Pacific members) to address shared challenges facing coral reefs and explore the innovative solutions being implemented to improve reef resilience.

Harnessing the power of the collective to share experiences, success stories and to progress future collaborative opportunities were a crucial part of the forum. Participating countries included Samoa, Papua New Guinea, American Samoa, Fiji, Cook Islands, Vanuatu, Palau, New Caledonia, Marshall Islands, Tuvalu, Tonga, Kiribati, Federated States of Micronesia and Nauru.

The diverse program of actions across the Pacific and on the Great Barrier Reef to strengthen reef resilience and reduce cumulative impacts provided a stimulating context for discussion between participants about how we can better protect our precious marine ecosystems.

WELCOME - JIRRI NYURRAMBA - BILAN GUDAN

Yirrganydji (Djabugay language) Yidinji language

<p>American Samoa</p>  <p>Talofa</p>	<p>Cook Islands</p>  <p>Kia Orana</p>	<p>Federated States of Micronesia</p>  <p>Welcome</p>	<p>Fiji</p>  <p>Ni sa bula</p>	<p>Kiribati</p>  <p>Mauri</p>
<p>Marshall Islands</p>  <p>Lakwe</p>	<p>Nauru</p>  <p>Ekamawir Omo</p>	<p>New Caledonia</p>  <p>Bienvenue</p>	<p>Palau</p>  <p>Alii</p>	<p>Papua New Guinea</p>  <p>Welkam</p>
<p>Samoa</p>  <p>Talofa</p>	<p>Tonga</p>  <p>Mālō e lelei</p>	<p>Tuvalu</p>  <p>Talofa</p>	<p>Vanuatu</p>  <p>Welkam</p>	

PACIFIC CORAL REEF COLLECTIVE

THE REEF IS CLOSER THAN YOU THINK!

CONNECTION BETWEEN PEOPLE & REEF
SOCIAL INCLUSION & SAFE SPACES for SHARING
THE TIME IS NOW!

VALUE TRADITIONAL KNOWLEDGE!

DO NOT LITTER

DISPOSE OF RUBBISH RESPONSIBLY!

CLIMATE CHANGE

ENERGY MANAGEMENT

WEATHER & NATURAL DISASTERS

TECHNOLOGY & CONNECTIVITY

LACK OF...
DATA

MONITORING

EXPERTISE

TOOLS

FUNDING & RESOURCES

CAPACITY BUILDING

GAPS BETWEEN SCIENCE & MANAGEMENT

CORAL REHABILITATION PROJECTS



NO PESTICIDES

WASTE WATER MANAGEMENT

WASTE

IMPROVE LEGISLATION ON RECYCLING

EDUCATION AND MARKETING CAMPAIGN

WE ALL HAVE A ROLE TO PLAY

OUR CHILDREN & GRANDCHILDREN & GREAT GRAND CHILDREN DEPEND ON OUR CHOICES TODAY!

COASTAL DEVELOPMENT

POOR LAND MANAGEMENT

LACK OF PUBLIC AWARENESS

TOO MANY ACTIONS!

RUN-OFF & SEDIMENTATION

POLLUTION

WASTE MANAGEMENT

TRADE IMPACTS

CONFLICTED INTERGENERATIONAL ATTITUDES

POOR ANCHORING

RANGE OF LATITUDES

REMOVEDNESS LEADS TO NON-EFFECTIVE COMPLIANCE

Our Shared Challenges

CORAL BLEACHING

INVASIVE SPECIES

EDUCATION

CONSISTENT MESSAGING

COMMUNITY INFO SESSIONS TO ENGAGE AND EDUCATE

PARTNERSHIPS BETWEEN GOVERNMENT, INDUSTRY AND SCHOOLS

DON'T BREAK CORALS - IT BREAKS HEARTS!



Collective Thinking

REEF REHAB PROJECTS

SUPPORTING WORK ALREADY HAPPENING

BUSINESS PLANNING

WHAT ROLE DOES THE COLLECTIVE PLAY?

EVERYBODY PLAYS A PART!

PROTECTED AREA COMPLIANCE

MAP TO SDGs & GLOBAL & REGIONAL AGREEMENTS

LOCAL NATIONAL PACIFIC-WIDE

TAILORED APPROACH

COMPLEX for COMMUNITY MEMBERS

FUTURE INVESTMENT OPPORTUNITIES

AWARENESS

OUR COLLECTIVE FUTURE

WHAT ARE THE NEEDS?

REOURCING PARTNERSHIPS

ON THE GROUND SUPPORT

ACCREDITATION SCHEME

REEF PROTECTION & CONSERVATION

USING THE FOLKS WHO ARE ACCESSING THE REEF REGULARLY

CORAL GARDENING MONITORING & ASSESSMENT

TOURISM OPERATOR SITE STEWARDS

EDUCATION

IMPROVED MPA ZONING

PURPOSEFUL DECISION MAKING

100% ENVIRONMENTAL AWARENESS and RESPECT

STRONG CONSERVATION ACTIONS

CHAMPIONS INFLUENCERS

PARTNERSHIPS

SCHOOL & COMMUNITY PARTNERSHIPS

TARGET FUTURE GENERATIONS

POLICY + STRATEGIES

FIGHTING GUIDELINES

PERMIT

WHAT CAN BE?

WHAT SHOULD BE?

WHAT COULD BE?

WHAT IS?

CHANGE IN MINDSET

STANDARDISED MONITORING PROGRAMS

EFFECTIVE COMMUNICATION

STRONG PACIFIC COMMUNITY

COMMUNITY SUSTAINABILITY

EDUCATION for ALL AGES

EVERYONE TAKING CONSERVATION ACTION

SIZE LIMITS BACKED BY LEGISLATION

CITIZEN SCIENCE SUPPORTING MANAGEMENT

FIT FOR PURPOSE

REEF PROTECTION

CONNECTION BETWEEN LAND AND SEA

LACK OF SCIENTIFIC KNOWLEDGE

NON-COMPLIANCE

LACK OF TECHNOLOGY

LEGISLATION 'NEEDS' UPDATING

WEAK REGULATIONS

LACK OF AWARENESS

LACK OF INFORMATION on FISH STOCKS

STRONG ASPIRATION for an ENVIRONMENTALY SUSTAINABLE FUTURE

POOR DATA AVAILABILITY

LACK OF FUNDING

REEF MONITORING

tafanoa

TALANOA

Talanoa is a traditional word used across the Pacific to reflect a process of inclusive, participatory, and transparent dialogue. The purpose of Talanoa is to share stories, build empathy and to make wise decisions for the collective good. The process of Talanoa involves the sharing of ideas, skills, and experience through storytelling.

Opportunities for knowledge sharing, capacity building and investment.

Throughout the Pacific Coral Reef Collective, the Reef Authority in collaboration with its partners, showcased several of its programs that deliver against the agency’s purpose to “provide for the long-term protection, ecologically sustainable use, understanding and enjoyment of the Great Barrier Reef for all Australians and the international community through the care and development of the Marine Park”.

Most importantly was demonstrating the partnerships that underpin the programs and that are critical to their success. Delegates were given the opportunity to consider how similar programs and partnerships could be established within their own context. Through Talanoa, delegates identified the programs/ initiatives they would like to explore the opportunity for further knowledge sharing, capacity building and investment. Delegates from each country were given five voting dots to indicate their level of interest in the programs showcased (Figure 2).

The areas of most significant interest identified by delegates were:

- Standardised approach to reef health monitoring and a Pacific wide reef knowledge system that enables easy access to data
- Protected area compliance
- Site-scale reef rehabilitation projects/techniques
- High standard tourism operations – site stewardship framework and plans.

Investment opportunity mapping (capacity building and/or knowledge sharing)

Reef Knowledge System			•		•				••		•		•	•	
Reef Rehabilitation Projects (Site-scale)		•		•		••	••			•		•	•	•	•
Joint Field Management Program, protected area compliance			•	•	•		••		••		•	•	•	•	•
COTS Control Program															
Reef Guardian Councils • environmentally sustainable practices local governments undertake in the catchment								•			•				
Reef Guardian Schools			•				••					•	•		•
Reef monitoring technologies Reef Cloud		•	•	•	•	•			•	•	•	•	•	•	
High Standard Tourism Operator Program: • Eye on the Reef • Site Stewardship Framework and Plans • Master Reef Guides		••	•	•	••	••		••		•		•			•
Traditional Use of Marine Resource Agreements - Land and Sea Ranger Programs		•	•							••	•			•	•

Figure 2: Level of delegate interest in the programs showcased.



Reflections – Thoughts – Feelings

Delegates expressed their desire that the forum will be just the beginning of a conversation, and a commitment to continue working together, sharing knowledge and building capacity.

Delegates were asked to write down the first words that came to mind when asked to describe their experience at the Pacific Coral Reef Collective.

"I think that week progressed our work on corals in the Pacific more than any singular action taken so far. It galvanised the region's view on what is possible for reef management. We came out with four very credible and linked business cases presenting a clear way forward. I believe that everyone involved came out so much richer."

Peter Davies, SPREP

"I would like to extend my special thanks to the Great Barrier Reef Marine Park Authority for hosting this event. The array of incredible activities and presentations during the event allowed us to gain deeper insights into the monitoring and conservation strategies. The knowledge gained and connections made will undoubtedly have a positive impact on our ongoing efforts towards coral reef preservation. I would like to express my utmost appreciation for allowing me to participate in the forum."

Kirisos Victus, Federated States of Micronesia

"I wanted to express my heartfelt gratitude for the exceptional organization of this committee. It was truly a remarkable experience, and I am delighted to have had the opportunity to participate and work with you guys about the protection, management, and monitoring of coral reefs in the Pacific. The knowledge-sharing and exchanges with colleagues from the Pacific Islands have been successful. Working together on coral reef conservation has been a pleasure, and I genuinely appreciate the dedication and passion demonstrated by everyone involved. The commitment to safeguarding our precious marine ecosystems is commendable, and I am thrilled to have contributed to this collective effort."

Maele Brisset, New Caledonia

"Faafetai teal lava for having us all. The overall program was well coordinated, and it was a really productive week. So much information learned and looking forward to more collectives and collaborations like this."

Fimareti Selu, Samoa

"The forum has been an eye-opening opportunity and most importantly networking."

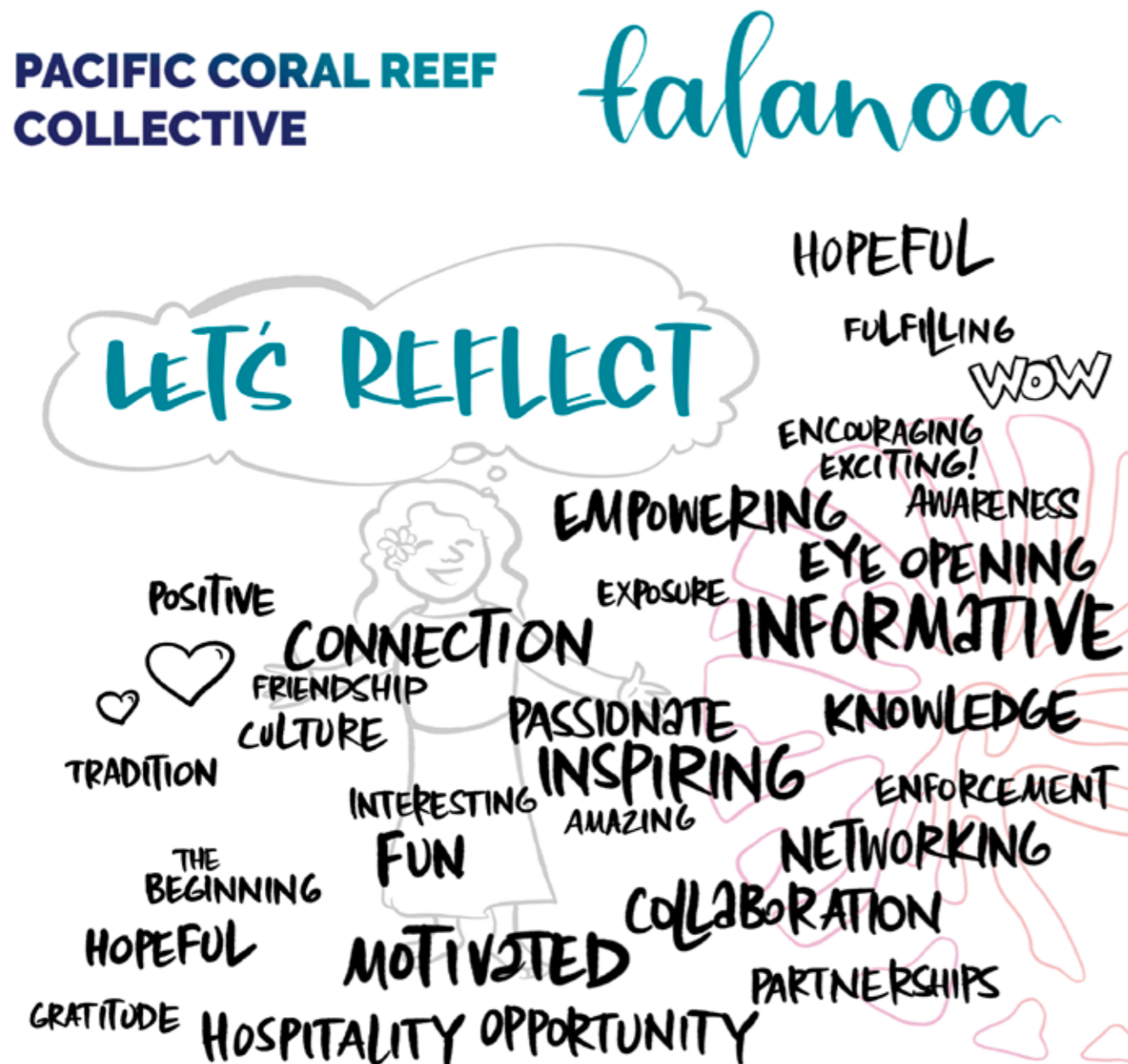
Temukisa Pesega Siale, Tuvalu

"I would like to thank the Great Barrier Reef Marine Park Authority for this amazing forum. It is a wakeup call to Kirrimati Island. I hope to follow up connections with technical expertise who can come to my island and assess, monitor and assist with coral reef monitoring and restoration."

Max Peter, Kiribati

"The collective has improved how I prioritise community engagement towards management. I realise how engaging and dedicating more time to include traditional leaders in management actions and activities."

Dua Rudolph, Marshall Islands





Australian Government

Great Barrier Reef
Marine Park Authority



Reef
Authority



Sustainable,
transformative,
and resilient for a
Blue Pacific

SPREP
PROE



INTERNATIONAL
CORAL REEF INITIATIVE